



PRINTPATH

FOLLOW PRINT | ACCOUNTING | RULES | BROWSE PRINT | GUEST PRINT

- Manage Prints & Copies and Track Scans & Faxes
- Follow Print, Secure Release & Mobile Print Release
- Accounting, Rules, Tracking & Use Reports
- Browse Print from MFP Panel & Mobile Guest Print
- An Integrated Konica Minolta MFP Software Accessory

PrintPath is a print and copy management system integrated with Konica Minolta MFPs. It provides MFP and printer security, control and cost reduction capabilities. PrintPath is ideal for all organizations that require a low cost, multi-featured and easy-to-use print and copy management application.





FEATURES

FOLLOW PRINT | SECURE RELEASE

Follow Print, also known as Secure Release Print, allows a document to be released and printed when the employee is at the MFP. When a document is printed ahead of time it may sit on the MFP for a while permitting it to be read by others.

Printing a document ahead of time also results in wasted printing. Many documents are printed and then left sitting on the MFP and never claimed.

Follow Print is easy. An employee sends a document to print as normal and then goes to the MFP at his/her convenience, logs in, and selects it for printing from the MFP user panel.

Follow Print can also be accomplished through any browser-enabled mobile device such as a smartphone, tablet, and laptop. A user logs into the company Follow Print server and his/her print jobs are displayed. The user can select both the applicable document to print and to which printer it will be printed.



ACCOUNTING & TRACKING

PrintPath tracks all print, copy, scan, and fax activities for bEST-enabled Konica Minolta devices, and it tracks all printing to non-Konica Minolta. This allows printer and MFP activities to be charged back to the applicable person. Charge-backs can be done by:

- User
- Project
- Department
- Client
- User defined

Charge-backs are important to many companies that require proper accounting and allocation of expended resources, such as printers and MFPs. PrintPath allows organizations enable such accounting functions.

The tracking capability also allows an organization to better manage by identifying high volume users and departments, and for reviewing printing and copying trends.

RULES

Based upon PrintPath's tracking function, print and copy rules can be established for all types of activities and functions. A wide variety of rules can be made including:

- Print & copy allowances
- Print & copy volumes
- Duplex vs. simplex printing
- Routing to least-cost printer

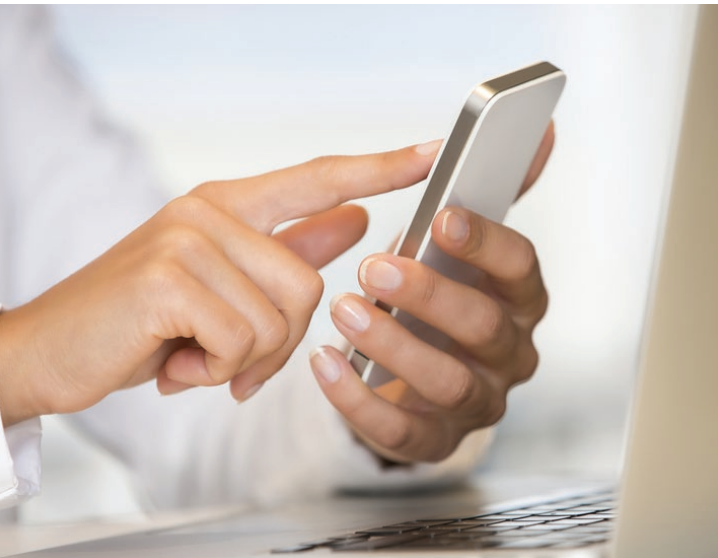
Rules are easily made and can be established by:

- Person
- Group
- Department
- Division
- User defined

Rules and alerts are delivered to the user via a subtle pop-up on his/her screen.

The messages for these pop-ups are easily and completely configurable by the PrintPath Administrator.





BROWSE PRINT

Browse Print allows a user to log into any bEST-enabled Konica Minolta MFP and browse network folders to locate a specific document. And, once located the document can be printed on that MFP. This efficient panel-selection capability saves time by eliminating the need for a person to select, and send to print, documents from another device such as a PC, laptop, tablet, or smartphone.

MOBILE GUEST PRINT

Guest Print allows guests to an organization the easy ability to print their document from their mobile device (smartphone, tablet, laptop, etc.) without having to login to the MFP or obtain credentials from another person.

The guest simply emails a document to a dedicated email address, such as GuestPrint@PrismSoftware.com, within the organization. PrintPath provides an automated reply to the guest providing a print code. The guest then enters this print code into any PrintPath-enabled MFP and his/her document is printed. The guest can also specify the number of print copies and whether to print duplex or simplex by entering a command into the email Subject line.

SCAN-TO-ME & SCAN-TO-HOME

Scan-to-Me allows a user to scan a document to his/her email address. This is a quick way of getting a document into the person's email system. Most MFPs can scan to an email address. However, the scan-to-me function provides a one-button process of easily and immediately scanning a document to oneself saving time and frustration.

Scan-to-Home allows a user to scan a document to a user's preselected 'home' folder. While nearly all MFPs already allow the scanning of documents to a variety of folders, the scan-to-home function provides an efficient and immediate one-button scan capability to a user's favorite folder. This provides efficiency and saves time.

ADMINISTRATIVE & MARKET

PRINTPATH PROVIDES CARD-SWIPE LOGIN AUTHENTICATION

PrintPath is fully integrated with Konica Minolta bEST-enabled MFPs and provides its own card-swipe login authentication for ease of sign-on.



